

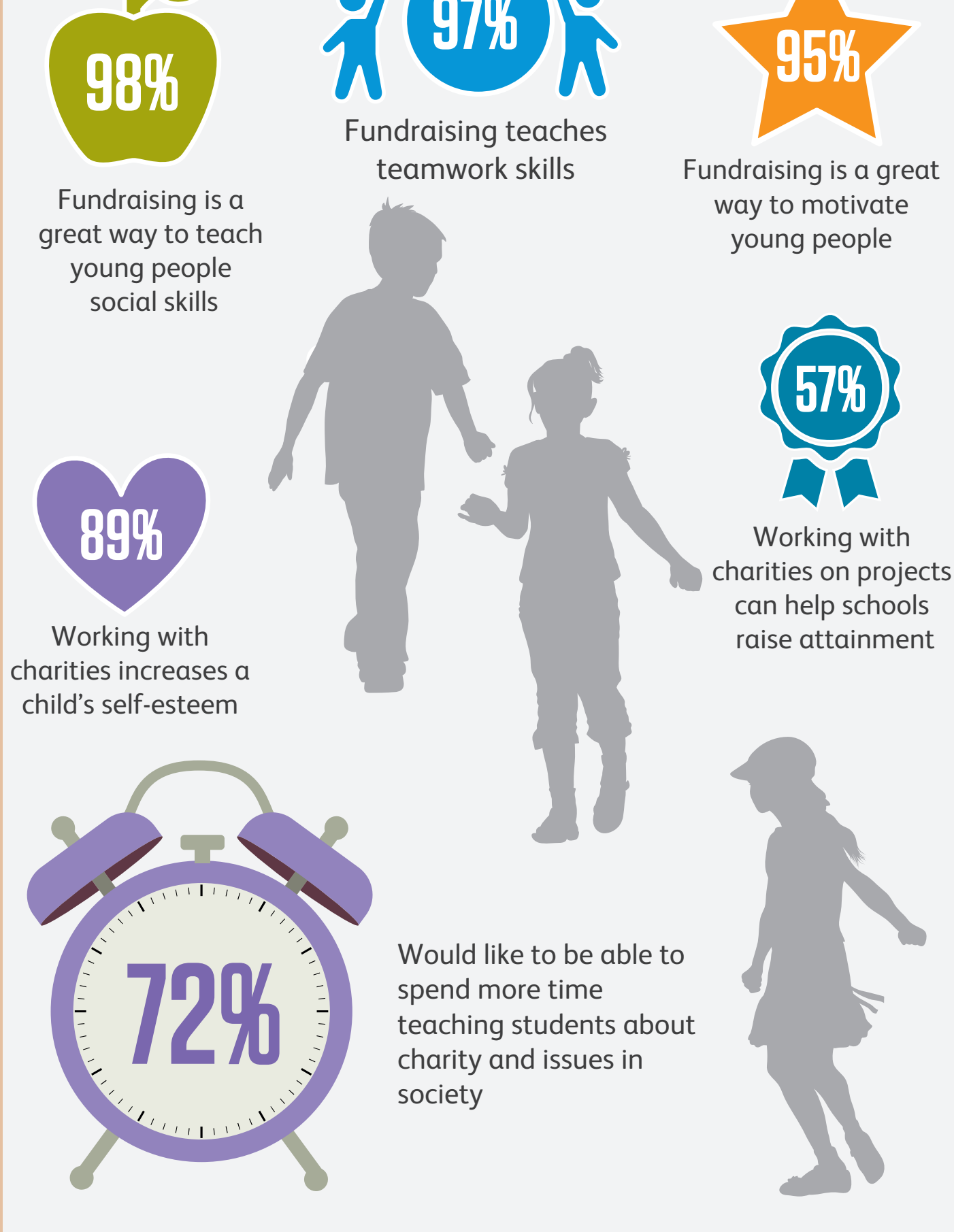
# SCHOOLS AND CHARITIES

What do teachers think about charity in schools?

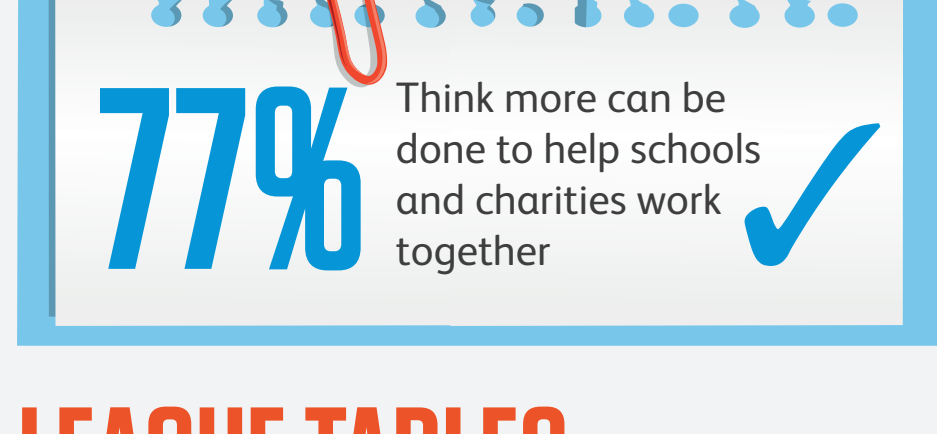


## WHAT ARE THE BENEFITS TO STUDENTS?

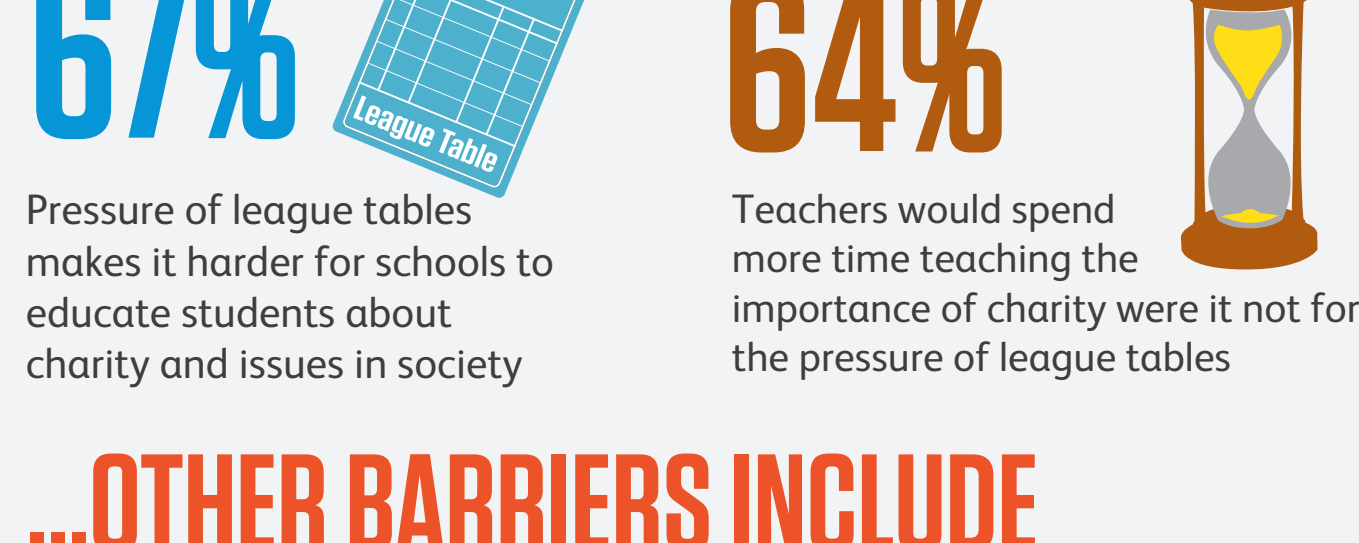
Percentage of teachers saying...



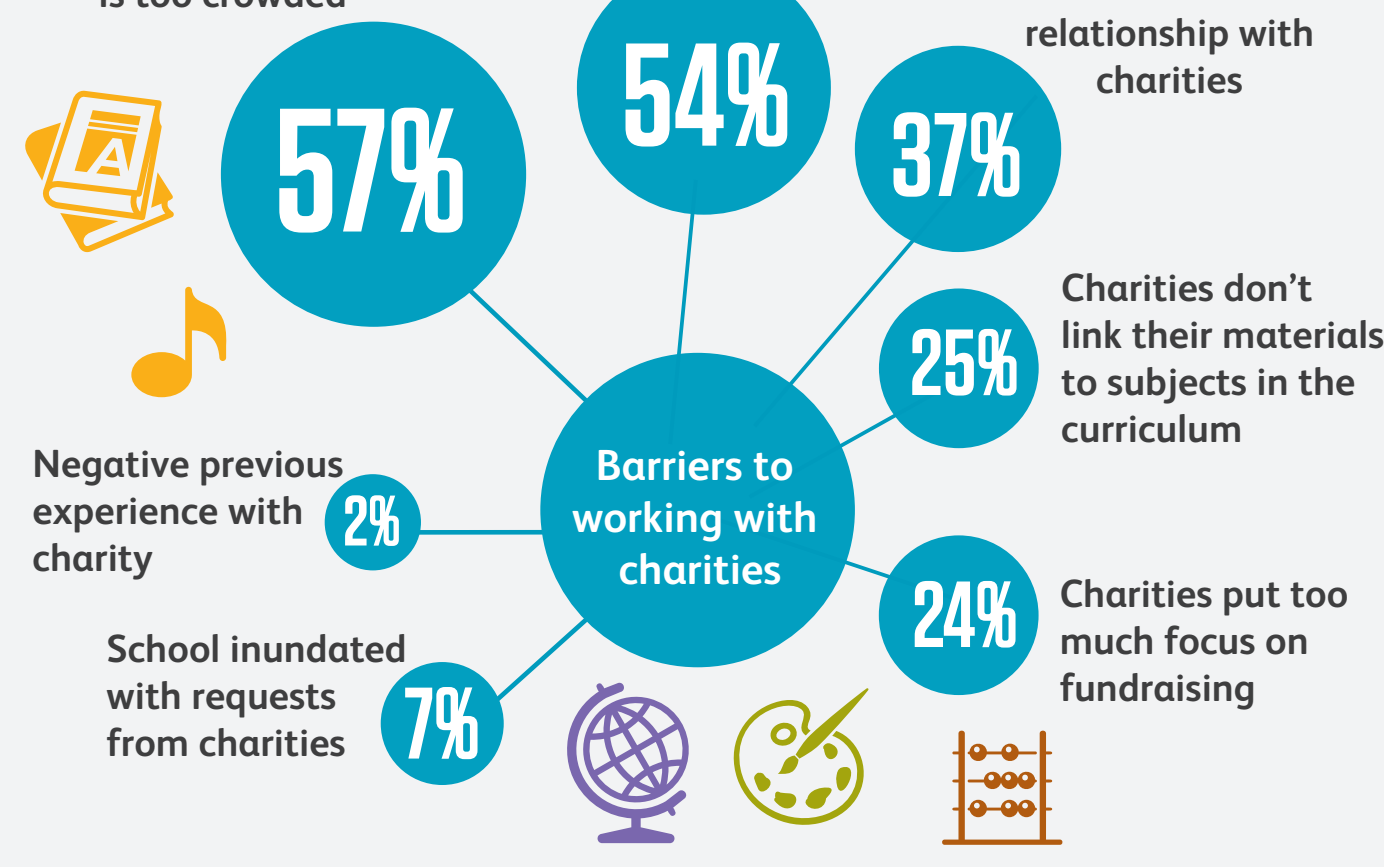
## MORE TO BE DONE...



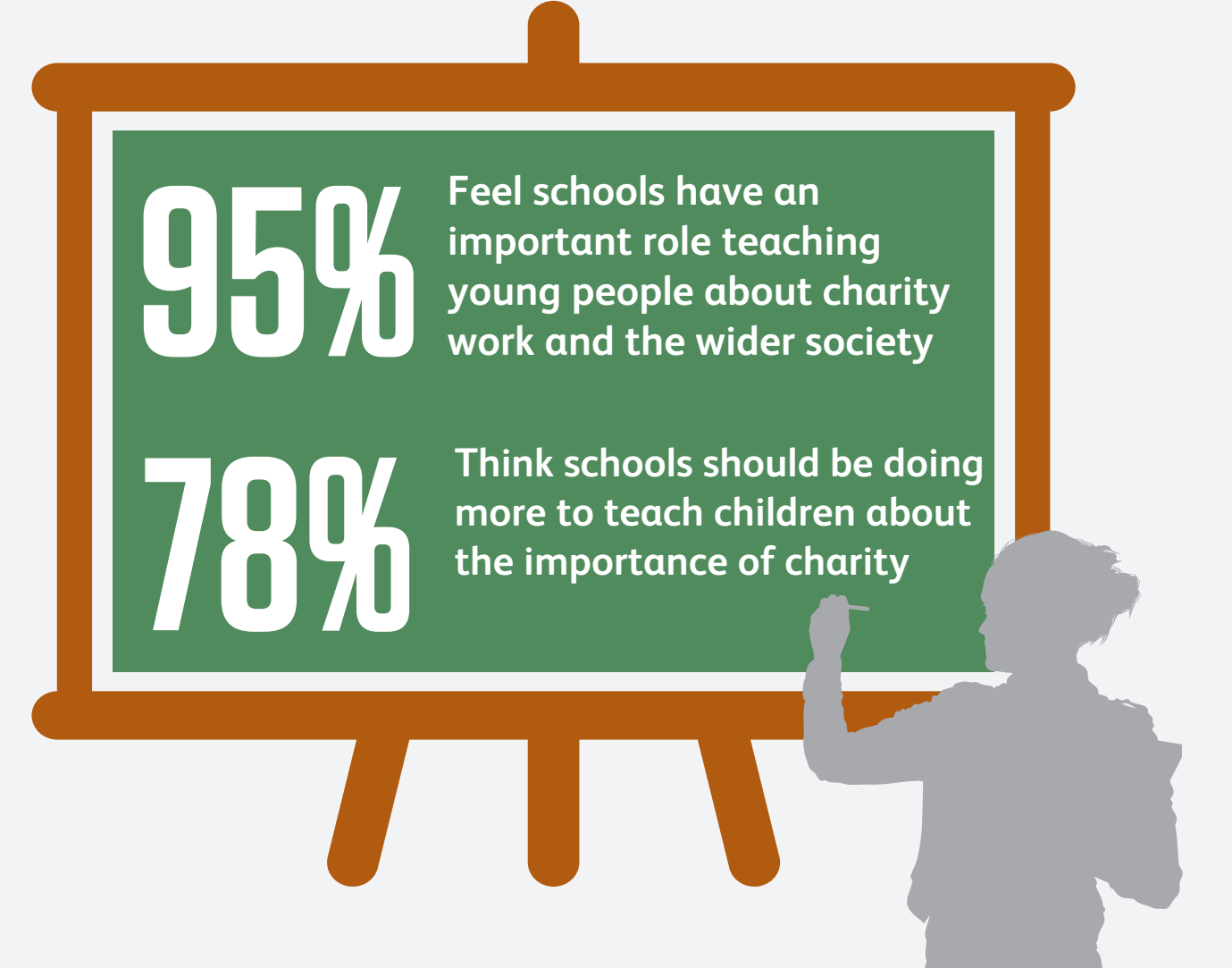
## LEAGUE TABLES LIMIT CHARITY FOCUS...



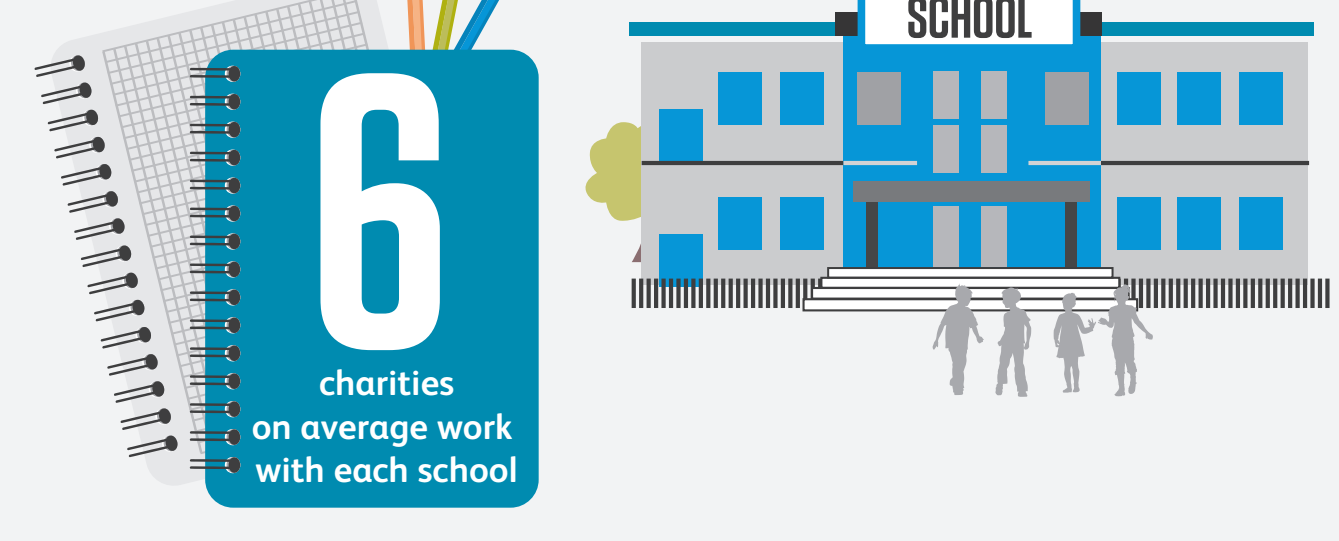
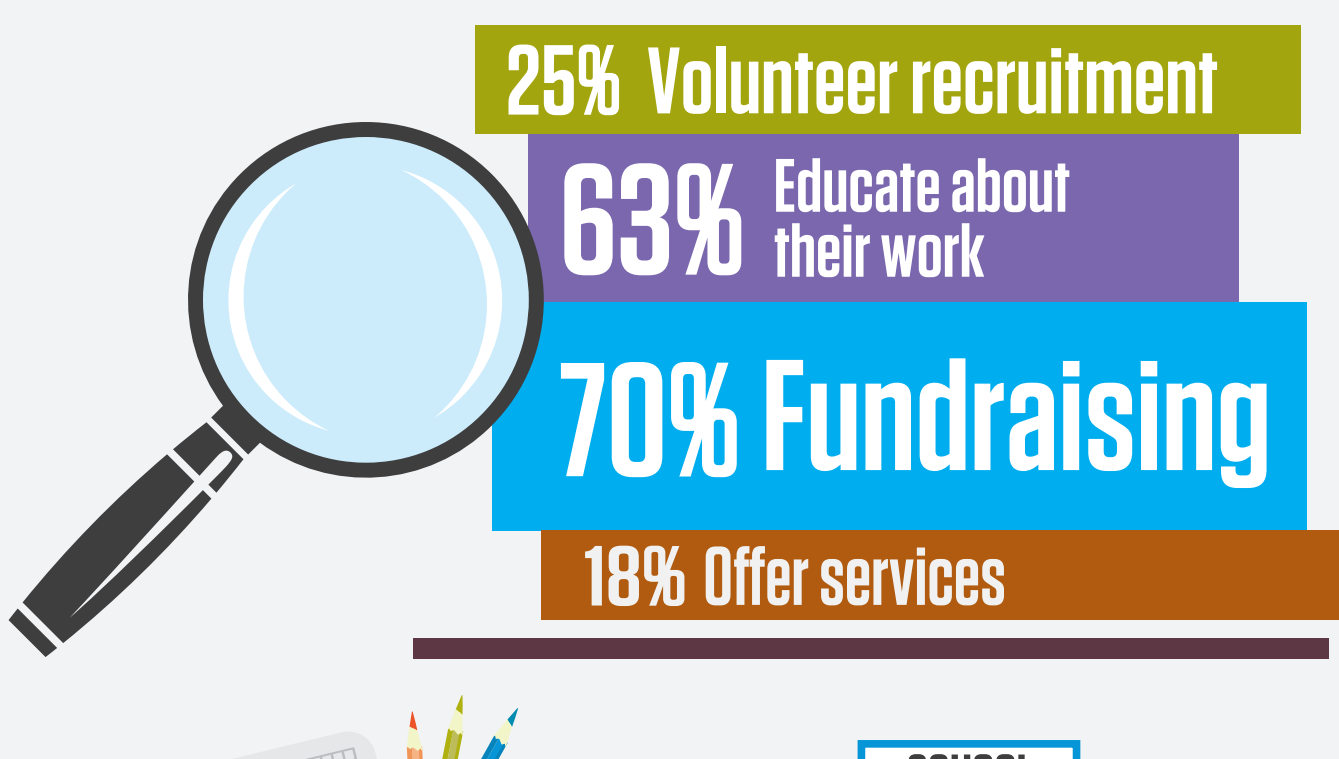
## ...OTHER BARRIERS INCLUDE



## MOST TEACHERS ALSO AGREE...

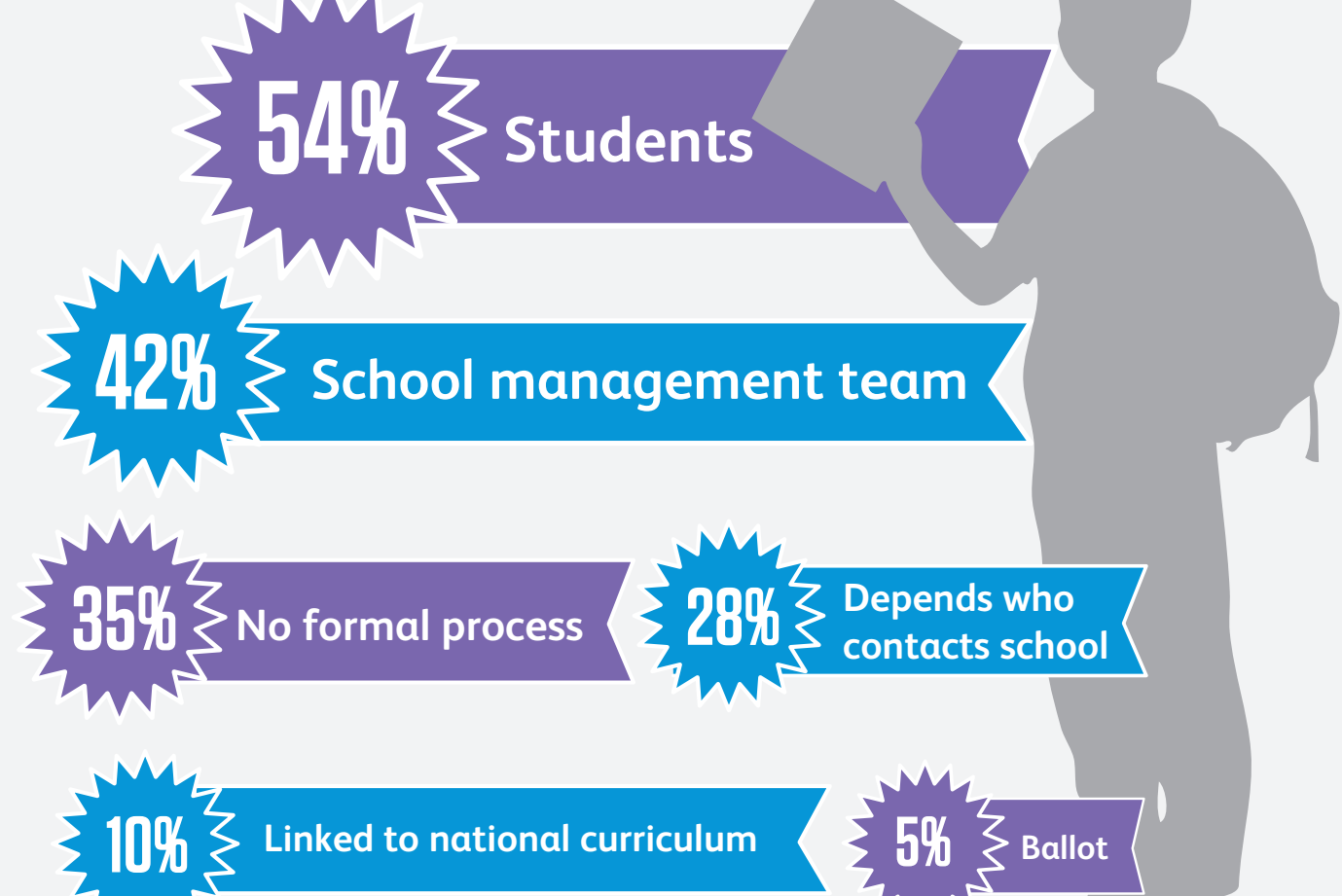


## HOW DO CHARITIES WORK WITH SCHOOLS?



## STUDENTS DECIDE ON THE CHARITIES

Who decides which charities to work with?



Data provided by ComRes

ComRes surveyed 200 secondary school teachers across the UK from 4 April to 12 April 2013. ComRes is a member of the British Polling Council and abides by its rules. Full data tables can be found at: [www.comres.co.uk](http://www.comres.co.uk)

[www.cafonline.org](http://www.cafonline.org)

Contact us at: [campaigns@cafonline.org](mailto:campaigns@cafonline.org)